

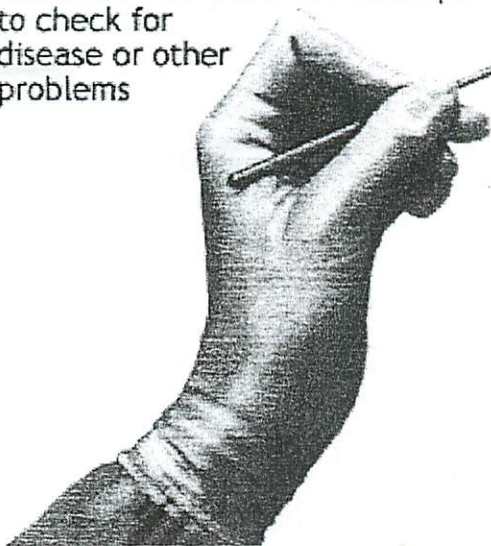


URL of this page: [//www.nlm.nih.gov/medlineplus/ency/article/003911.htm](http://www.nlm.nih.gov/medlineplus/ency/article/003911.htm)

Pap smear

The Pap smear is a screening test for cervical cancer. Cells scraped from the opening of the cervix are examined under a microscope. The cervix is the lower part of the uterus (womb) that opens at the top of the vagina.

Pap smear:
cells are scraped from the cervix
and examined under a microscope
to check for
disease or other
problems



Cervix viewed
through speculum
with patient in
lithotomy position

ADAM

How the Test is Performed

You lie on a table and place your feet in stirrups. The doctor or nurse gently places an instrument called a speculum into the vagina to open it slightly. This allows the doctor or nurse to see inside the vagina and cervix.

Cells are gently scraped from the cervix area. The sample of cells is sent to a lab for examination.

How to Prepare for the Test

Tell your doctor or nurse about all the medicines you are taking. Some birth control pills that

contain estrogen or progestin may affect test results.

Also tell your doctor or nurse if you:

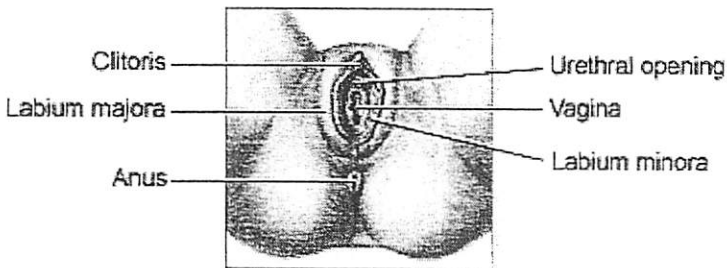
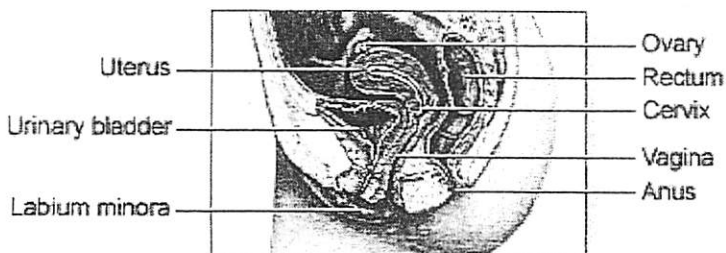
- Have had an abnormal Pap smear
- Might be pregnant

Do not do the following for 24 hours before the test:

- Douche (douching should never be done)
- Have intercourse
- Use tampons

Avoid scheduling your Pap smear while you have your period (are menstruating). Blood may make the Pap smear results less accurate. If you are having unexpected bleeding, do not cancel your exam. Your doctor will determine if the Pap smear can still be done.

Empty your bladder just before the test.



*ADAM.

How the Test will Feel

A Pap smear may cause some discomfort, similar to menstrual cramps. You may also feel some pressure during the exam.

You may bleed a little bit after the test.